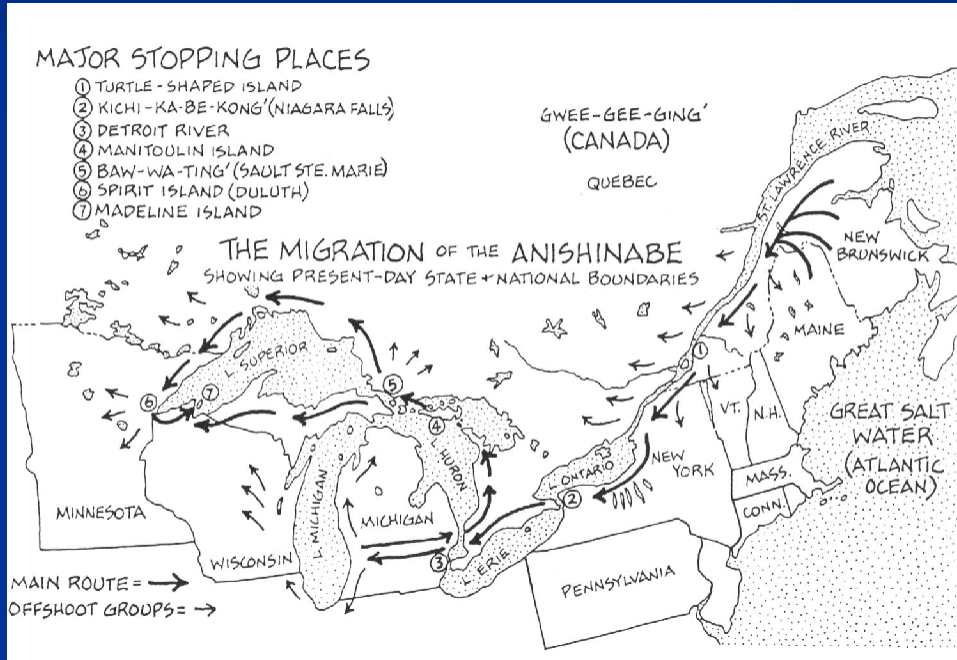


Manoomín (Wild Rice)

MN WR Task Force

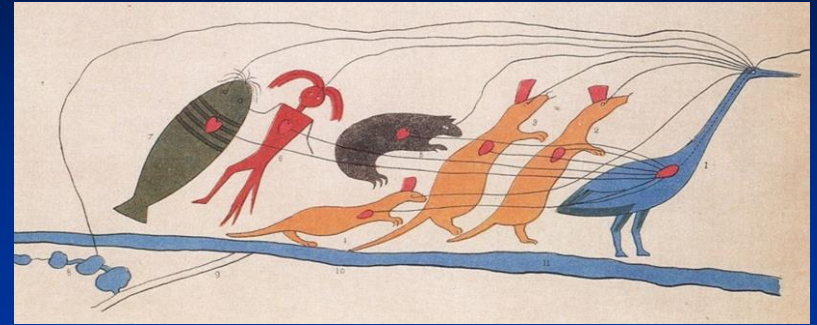


Manoomin's cultural significance cannot be over-stated.



“The privilege of hunting, fishing and gathering the wild rice, upon the lands, the rivers and the lakes included in the territory ceded, is guaranteed to the Indians,...

From the Treaty of 1837



“That our people... desire a donation of twenty-four sections of land, covering the graves of our fathers, our sugar orchards, and our rice lakes and rivers, at seven different places now occupied by us as villages...”

From a petition of the chiefs of the
Lake Superior Chippewa, 1849



A North American Resource

Distribution of Northern Wild Rice



Much has
been lost

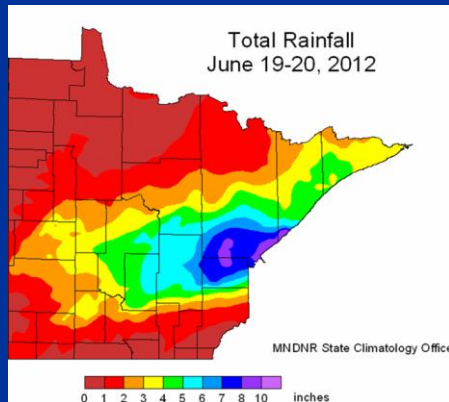
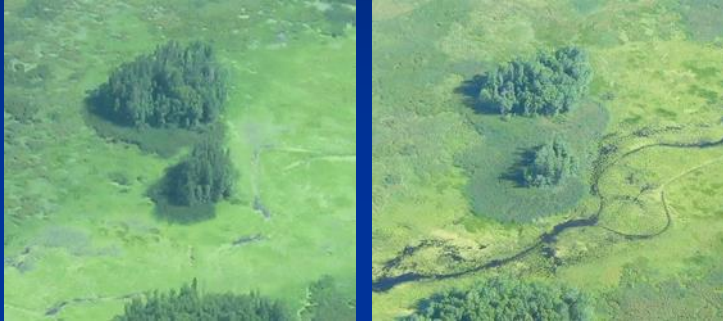


Rice Lake, Polk County

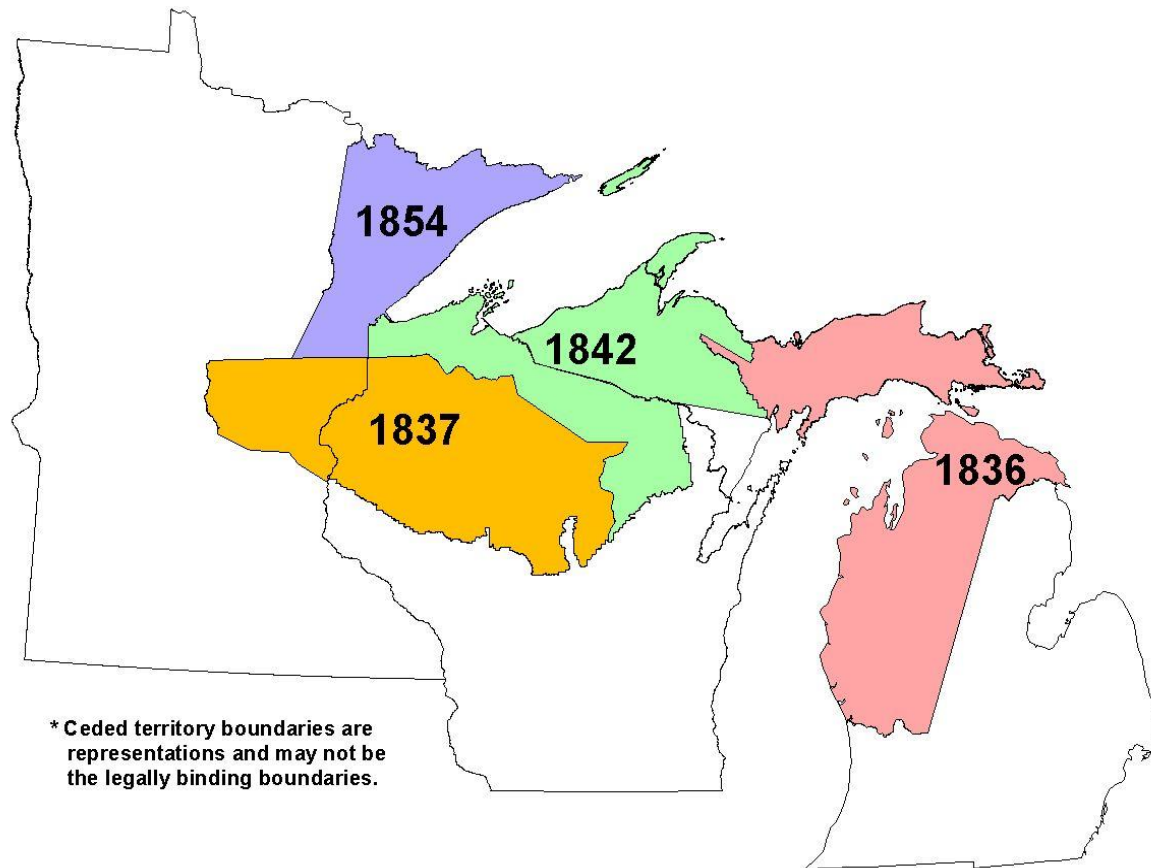


Chippewa Flowage,
Sawyer County

And the list of threats is long and growing



Treaty ceded territories of Lake Superior Chippewa



Some Forms of Stewardship



Folks have been doing this a
while...

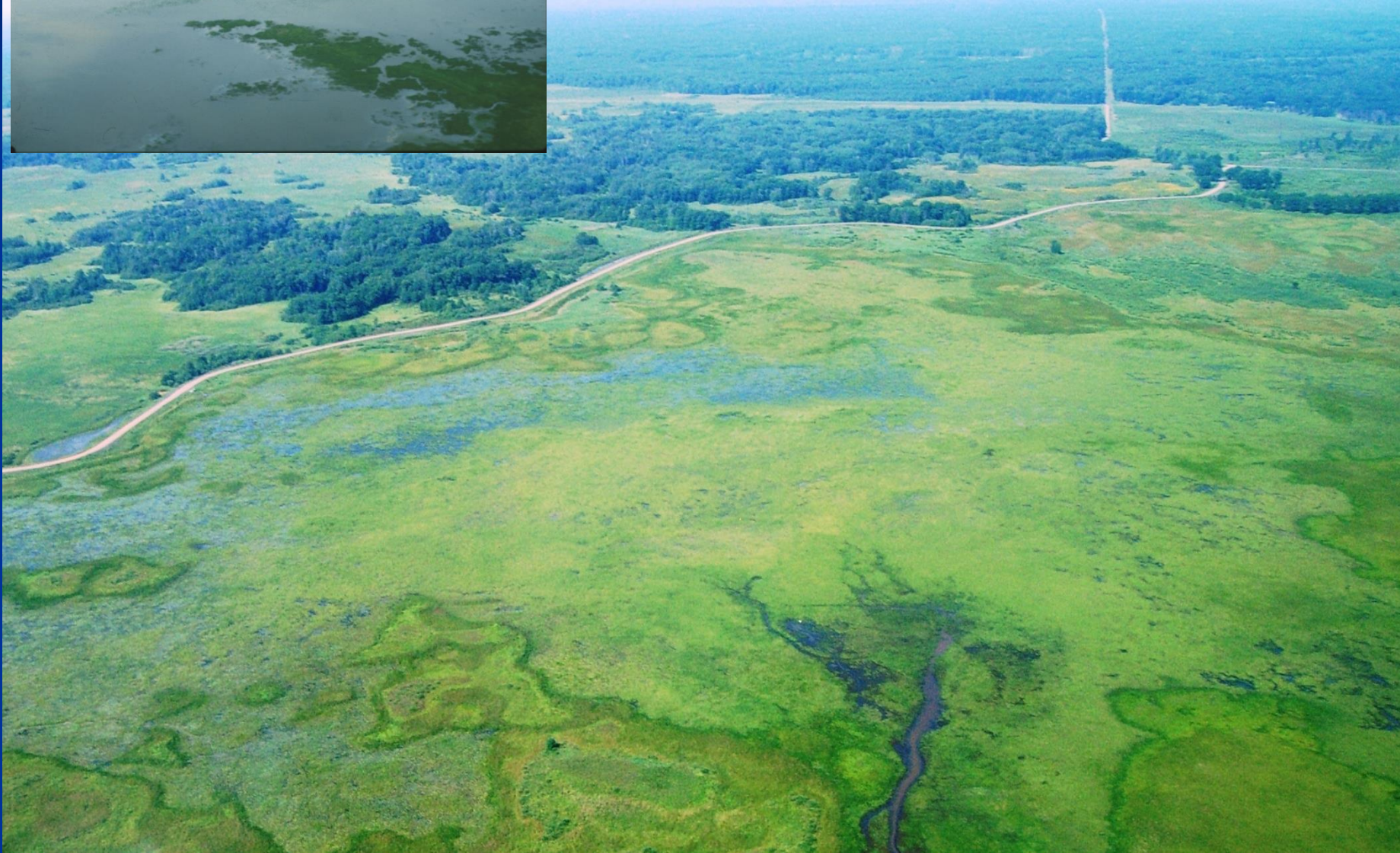


Wild rice wrapped in wet moss for planting, circa 1930.

Seeding



Phantom Flowage



Restoration of Hydrology & Water Level Mgmt.



Mud Lake





2006

Mud Lake

2010



Lac Vieux Desert

2003

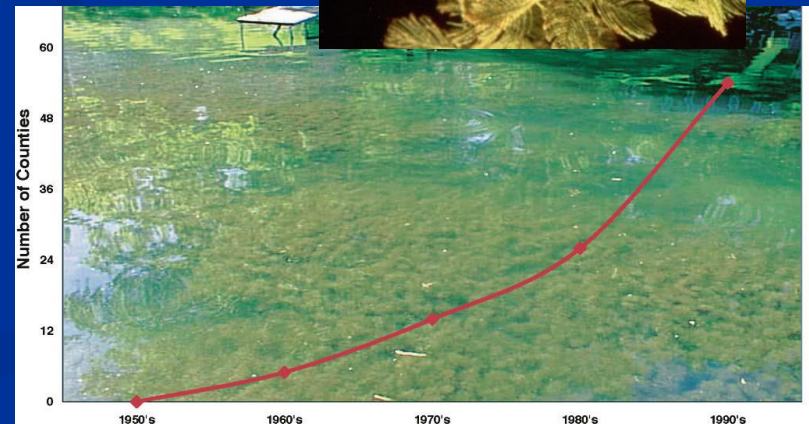
2010



Infrastructure Work



Aquatic Invasive, Nuisance Species Control Efforts



Amik (Beaver) Control

(on selected waters)



The Swan and Goose Issue



Locally breeding swans and geese
feed on manoomin all summer.

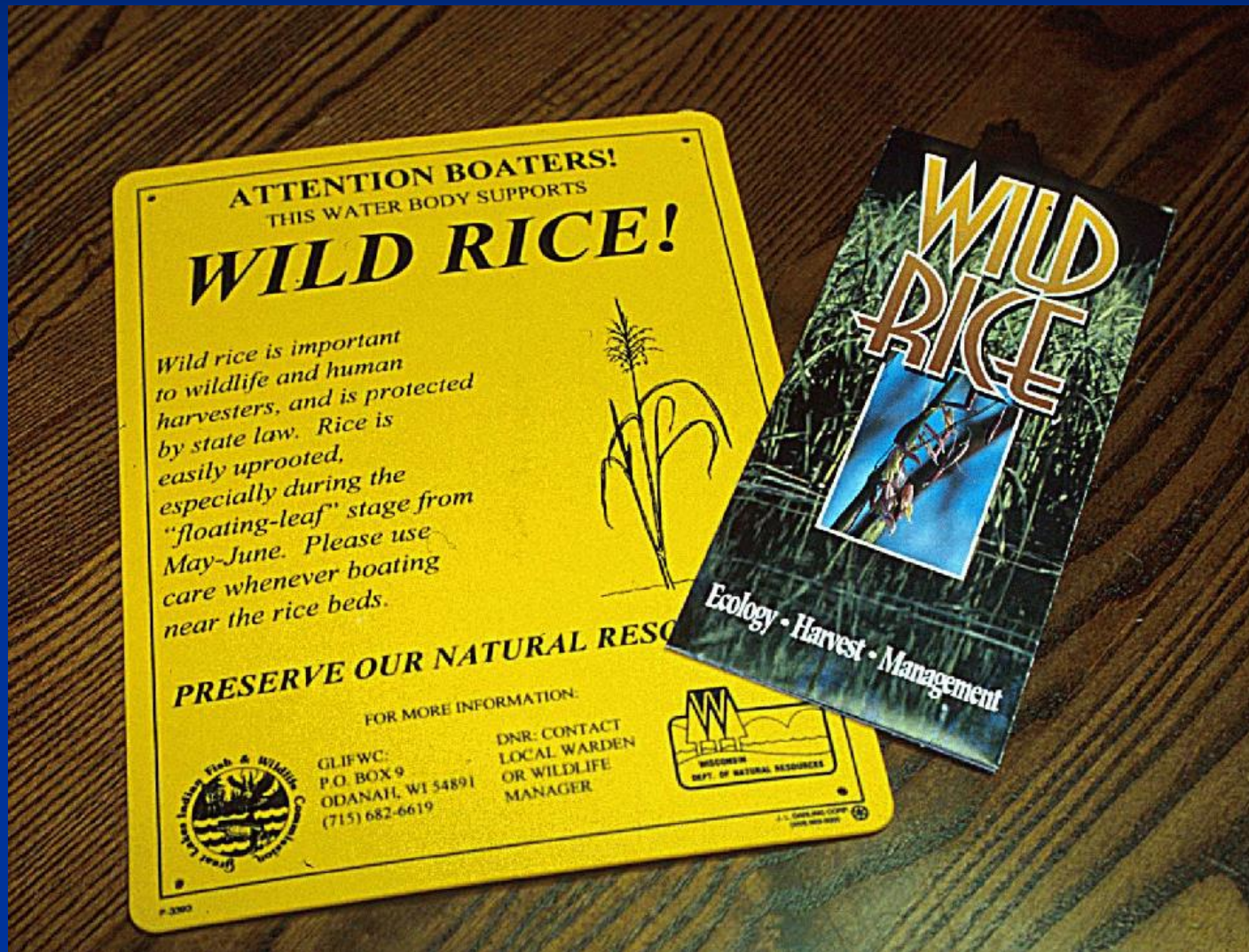


Permit Review

*“The [State] agrees to consult ... before the issuance of any permit which is required to be obtained from the State regarding any activity which may reasonable be expected to directly affect the abundance or habitat of **wild rice** in the ceded territory.”*



Education & Outreach



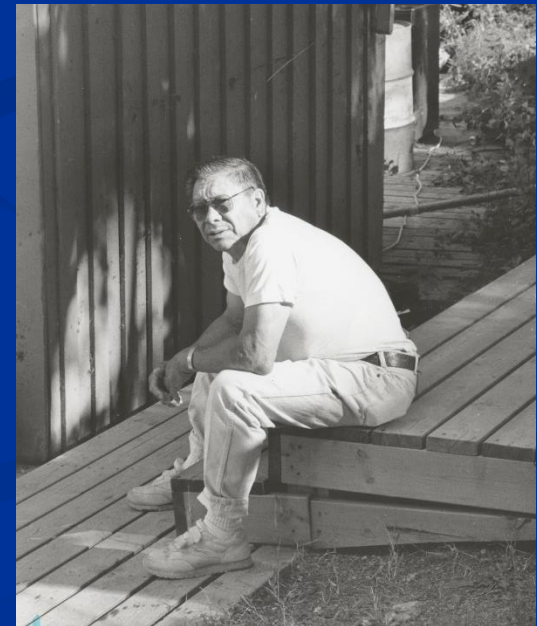


Air & Ground Abundance Surveys



Information Sources

- TEK – Elders, Rice Chiefs, Harvesters
- Manoomin Committee / Cooperators
- Annual Abundance and Harvest Surveys
- Scientific Literature
- Historical Literature



Partners

■ PLENTY!

- State
- Forest Service
- Counties
- Lake Associations
- Townships
- DU
- Wisconsin Waterfowl Association
- Wisconsin Wetlands Association
- APHIS
- Tribes
- Other Conservation Organizations
- Private Individuals
- Etc...

Barriers

- Knowledge gaps / training
- Time and funding
- Dedicated positions
- Under-informed public
- Inadequate monitoring



Some Take Home Messages:

- Big Lesson: The complexity of and extent of the threats; the answers are not simple
- Threats can be broad scale, or site specific; short term or long.
- Seeding can be effective, but often is not enough.



Pertinent Mandates:

- A responsibility to take care of a “more than human being” that takes care of us
- A responsibility to the 7th Generation Yet to Come; Hopefully they will be able to see that we considered their needs when we decided what to do.



Photo Courtesy of Annette Drewes

For more information...



Please contact us at:

715-682-6619

or

www.glifwc.org

Miigwech!





8 years
on
Dean Lake

