



Publication Date: February 20, 2012
Vol. 36, No. 4

Next Publication: March 5, 2012
Submittal Deadline: February 27, 2012
Submit to EQB.Monitor@state.mn.us

ENVIRONMENTAL ASSESSMENT WORKSHEET

EAW Comment Deadline: March 21, 2012

Project Title: Woodbury Drive (County State Aid Highway 19) Improvements Project

Description: Washington County is proposing to reconstruct CSAH 19 (Woodbury Drive) from Park Crossing to ¼ mile south of Bailey Road, in the city of Woodbury. The roadway reconstruction will expand the existing two-lane roadway to a four-lane divided roadway. The project will add multi-use trails to both sides of Woodbury Drive. The project also includes the construction of two roundabouts on Woodbury Drive; one at the intersection with Bailey Road and one at the intersection with Lake Road.

Copies of the EAW are being distributed to agencies on the current Minnesota Environmental Quality Board list and members of the Woodbury Drive (CSAH 19) Improvements Project Management Team, among others. Availability of the document has also been announced via local newspaper. The EAW can be accessed electronically via the project website (<http://www.co.washington.mn.us/woodburydrive>), and is also available for review in hard copy at Washington County Public Works Building and the City of Woodbury public library.

A public open house will be held for this project on February 23, from 4:30 to 7:30 p.m. at the Eagle Valley Golf Course Banquet Room, 2600 Double Eagle Lane, Woodbury, MN. The comment period will begin on **February 20, 2012**. Written comments will be accepted through **March 21, 2012**, and should be addressed to the contact person listed below.

RGU: Washington County

Contact Person: Ms. Jane Krebsbach
Design Coordinator
11660 Myeron Road North
Stillwater, MN 55082
651-430-4330
Jane.Krebsbach@co.washington.mn.us

The *EQB Monitor* is a biweekly publication of the Environmental Quality Board that lists descriptions and deadlines for Environmental Assessment Worksheets, Environmental Impact Statements, and other notices. The *EQB Monitor* is posted on the Environmental Quality board home page at <http://www.eqb.state.mn.us/>.

Upon request, the *EQB Monitor* will be made available in an alternative format, such as Braille, large print, or audio tape. For TTY, contact Minnesota Relay Service at 800-627-3529 and ask for Department of Administration. For information on the *EQB Monitor*, contact:

Minnesota Environmental Quality Board
520 Lafayette Road – 4th Floor
St. Paul, MN 55155-4194
Phone: 651-757-2873
Fax: 651-297-2343
<http://www.eqb.state.mn.us>

EQB MONITOR

EAW NEED DECISIONS

The noted responsible governmental unit has made a decision regarding the need for an EAW in response to a citizen petition.

- City of Minneapolis, Linden Corner Project, Denied

NOTICE OF DECISION

PETITION FOR AN ENVIRONMENTAL ASSESSMENT WORKSHEET FOR THE LINDEN CORNER PROJECT

In response to a petition signed by more than one hundred (100) individuals and filed with the Minnesota Environmental Quality Board, the City of Minneapolis has made a determination regarding the need for an Environmental Assessment Worksheet (EAW) for the proposed Linden Corner project located at 4242, 4246, 4246 ½, 4250 and 4264 Upton Avenue South, City of Minneapolis, Hennepin County, Minnesota.

Mark Dwyer with Linden Hills Redevelopment, LLC, has proposed to construct a mixed-use building including 40 dwelling units and 11,227 square feet of ground floor commercial space on the properties located at 4242, 4246, 4246 ½, 4250 and 4264 Upton Avenue South.

On January 27, 2012, the City of Minneapolis, City Council concluded that the petitioners failed to demonstrate the project may have the potential for significant environmental effects, decided not to order the completion of an EAW, adopted the related Findings of Fact and Record of Decision document and concluded that the process was consistent with the requirements of the Minnesota Environmental Policy Act and Minnesota Rules Chapter 4410. This City Council action was approved by the Mayor on February 3, 2012 and was published in the Finance and Commerce newspaper on February 4, 2012.

The adopted “Findings of Fact and Record of Decision” document is available for review at the following website <http://www.minneapolismn.gov/meetings/council/WCMS1P-085162>. Questions should be directed to Hilary Dvorak, Interim Planning Manager, phone; 612-673-2639; email: hilary.dvorak@minneapolismn.gov, TDD: 612-673-2157; facsimile: 612-673-2726.

EIS NEED DECISIONS

The responsible governmental unit has determined the following projects do not require preparation of an EIS. The dates given are, respectively, the date of the determination and the date the EAW notice was published in the *EQB Monitor*.

- Minnesota Department of Transportation, Trunk Highway 15/Stearns County State Aid Highway 120 Interchange, Cities of Sartell and St. Cloud, Stearns County, February 2, 2012 (November 28, 2011)

PETITIONS FILED

The following petitions have been filed with the EQB requesting preparation of an EAW. The EQB has assigned the indicated unit of government to review the petition and decide on the need for an EAW.

- City of Savage, Indoor Sports Facility at Savage Community Park

NOTICE OF SCOPING EAW, DRAFT SCOPING DECISION DOCUMENT AND PUBLIC SCOPING MEETING

EIS Scoping EAW Comment Deadline: March 21, 2012

Project Title: Merriam Junction Sands

Description: The Scoping EAW and Draft Scoping Decision Document for Merriam Junction Sands Mining and Processing Facility are now available for the 30 day scoping period.

Merriam Junction Sands is proposing to develop approximately 954 acres of land in Louisville Township, Scott County for nonmetallic mineral mining and processing operations. Mining and processing operations include: stripping, blasting, dewatering, extraction, washing, drying, screening, rail load out and phased reclamation.

The Scoping EAW and Draft Scoping Decision Document are available on the Scott County website www.co.scott.mn.us, or please contact the RGU contact for a copy of the documents.

A Public Scoping Meeting to receive comments on the EIS Scope will be held on March 13, 2012. The meeting will be held at approximately 9:30 a.m. in the County Board Room, Scott County Government Center, 200 Fourth Avenue West, Shakopee, Minnesota.

Written comments can be submitted by March 21, 2012 to the address below.

RGU: Scott County

Contact Person: Kate Sedlacek
Scott County Environmental Health Department
200 Fourth Avenue West
Shakopee, MN 55379
Phone: 952-496-8351
Email: ksedlacek@co.scott.mn.us

AUAR UPDATE

Project Title: Everton Avenue Neighborhood Study Area

The City of Hugo has completed the Everton Avenue Neighborhood Study Area AUAR Update. The AUAR Update was sent to the EQB mailing list on February 4, 2012. The comment period was anticipated to end February 17, 2012, but has been extended to March 2, 2012 to accommodate the EQB Monitor publication. Please send comment to:

Contact Person: City of Hugo
Bryan Bear
14669 Fitzgerald Ave
Hugo, MN 55038
bbear@ci.hugo.mn.us

NOTICES**Notification of Releases of Genetically Engineered Organisms**

12-NO-016	University of Minnesota	Wheat	Fungus Resistant	Dakota
12-NO-017	Pioneer Hi-Bred International	Corn	Visual and Selectable marker; Recombinase, Increased Transformation Frequency, Repressor, Method Development; Herbicide Tolerant; Insect and Virus Resistant; Drought and Cold Tolerant, Altered Plant Development, Maturity and Fertility, Nitrogen Utilization Efficiency Increase, Increased Yield Stability and Yield, Yield Enhancement; Oil Content Increased	Benton (2), Blue Earth (2), Clay, Kandiyohi(4), Olmsted, Stevens, Waseca, Wilkin
12-NO-018	Syngenta	Sugarbeet	Virus Resistant	Renville (10)
12-NO-019	Betaseed	Sugarbeet	Herbicide Tolerant	Carver (2), Scott (6)

For more information contact Tina Seeland, Minnesota Department of Agriculture, 625 Robert St. N., St. Paul, MN 55155, 651-201-6404, tina.seeland@state.mn.us.

Minnesota's Lake Superior Coastal Program

Minnesota's Lake Superior Coastal Program (MLSCP) is reviewing the following proposal for consistency with MLSCP enforceable policies. Section 306(d)(14) of the CZMA requires public participation in the federal consistency review process.

Project Title: U.S. EPA General NPDES Vessel Discharge Permits

Description: The U.S. EPA proposes issuance of two general NPDES permits for discharges incidental to the normal operation of vessels. Details on the proposal can be viewed at:

<http://cfpub.epa.gov/npdes/vessels/vgpermit.cfm>

Contact Person: Cliff Bentley
MLSCP Federal Consistency Coordinator
1568 Highway 2
Two Harbors, MN 55616
cliff.bentley@state.mn.us

All comments must include name, address and telephone number of the person commenting. Any assertion of inconsistency with the enforceable policies of the MLSCP must state with reasonable particularity the state law or laws that would be violated.

Comments must be submitted by: February 24, 2012

Minnesota Pollution Control Agency Notice of Rescheduled Public Informational Meeting

NOTICE IS HEREBY GIVEN, that in light of public comments received during the public notice period of the Northern Metals LLC draft Air Emission Permit No. 05300480-003 and Environmental Assessment Worksheet (EAW), the Commissioner of the Minnesota Pollution Control Agency (MPCA) has decided to revise the draft permit and issue a revised EAW on the project.

The MPCA will be placing these revised documents on public notice at a later date. Because these documents are being revised, the Commissioner has decided to close the extended public comment period on the previous documents that was to end on March 14, 2012.

In order to provide sufficient time for revised document preparation and public review of these documents prior to the public informational meeting, the Commissioner has decided to reschedule the public informational meeting previously set for Tuesday, February 28, 2012. The public will be notified of the time and place of the rescheduled meeting at a later date. The MPCA will issue a notice of the new meeting date no less than 30 days before the meeting. The MPCA will place the revised draft Air Emission Permit and EAW on public notice prior to the rescheduled meeting.

Questions about this public notice should be directed to: Ralph Pribble – Information Officer
Minnesota Pollution Control Agency
520 Lafayette Road North
St. Paul, Minnesota 55155
Voice- 651-757-2657
Fax- 651-297-8687
ralph.pribble@state.mn.us

International Falls Land Port of Entry Improvements Study Record of Decision

The U.S. General Services Administration (GSA) has published a Record of Decision (ROD) for the International Falls Land Port of Entry (LPOE) Improvements Study in International Falls, Koochiching County, Minnesota. The purpose of this ROD is for the GSA to state its decision, identify the alternatives considered by the GSA in reaching its decision (including which alternative was considered to be the environmentally preferred alternative), and to state whether all practicable means to avoid or minimize environmental harm from the alternative selected have been adopted.

The GSA is proposing to replace the undersized and functionally obsolete LPOE with a LPOE which meets the needs of Custom and Border Protection (CBP) and other federal agencies. The purpose for the study was to identify an alternative that provides efficient and safe inspection and processing of vehicles and people at the LPOE, meets the needs of the CBP, and complies with the design requirements of the GSA. The study was needed because the existing LPOE had many problems and deficiencies, preventing the agencies operating at the LPOE from adequately fulfilling their respective missions.

The GSA announced the availability of the Draft Environmental Impact Statement (EIS) for the International Falls LPOE Improvements Study on January 14, 2010. A 45-day comment period immediately followed, during which the GSA invited Federal, State and local agencies, organizations and individuals to submit comments on the Draft EIS. A public hearing was held at the Rainy River Community College on January 27, 2010 and a transcript of the hearing was prepared. An advertisement for the public hearing appeared in International Falls' *The Daily Journal* on two occasions prior to the hearing and advertisements for the public hearing were placed at Boise, Inc. and other prominent locations. Two attendees offered substantive comments during the public hearing. The GSA received eight letters and one e-mail providing comments, copies which were contained in the Final EIS with responses to the substantive comments.

After careful consideration of the comments received on the Draft EIS, the GSA identified Alternative 10 as best satisfying the proposed action's purpose and programmatic needs and has the least impact on the human and natural environment. Alternative 10 was identified as the Preferred Alternative in the Final EIS.

On October 7, 2011 GSA published a notice of availability in the Federal Register for the Final Environmental Impact Study. A customary 30-day wait period was observed and a notice of availability for the ROD was published in Federal Register on January 18, 2012. GSA is awaiting federal funding to move forward with site acquisition and procurement for design services. An anticipated date for funding approval is unknown at this time.

The GSA appreciates the assistance and feedback you have provided throughout this study. If you have questions, contact Donald Melcher at (312) 353-1237 or donald.melcher@gsa.gov.

Notice of Public Hearing and Availability of Environmental Assessment

Project Title: Northport 115 kV Substation and Transmission Line

Description: Great River Energy and Benco Electric Cooperative (Benco) have determined that a new 115 kilovolt (kV) substation and transmission line are needed to meet growing electrical demand in the area near North Mankato in Nicollet County, Minnesota (see enclosed fact sheet/map).

Benco proposes to construct the new “Northport” 115 kV Substation in Section 3, T108N, R27W, in the North Mankato Industrial Park (see photo of typical substation on fact sheet).

Great River Energy, power supplier to Benco, proposes to construct approximately 1.1 miles of new overhead double circuit 115 kV transmission line to energize this new substation. The transmission line will be located in the City of North Mankato, along Sections 2 and 3, T108N, R27W in Nicollet County. The line will connect to the existing Xcel Energy 115 kV line between the South Bend and Wilmarth substations. The line will be constructed using steel poles with horizontal post insulators (see photo on fact sheet). The poles will generally be 70-90 feet above ground with a 350-450 foot span between poles.

The Environmental Assessment (EA) for the proposed 115 kV Substation and Transmission Line entitled Northport Project is available for review by contacting Michael Fischer at City of North Mankato, 1001 Belgrade Ave, North Mankato, MN 56003.

Comments may be submitted to the address below, or to michaelf@northmankato.com or Fax: 507-625-4151.

Comment Period Deadline: 10 Day Comment Period

Public Hearing Date: Thursday, March 8, 2012. Planning Commission meeting begins at 7:00 p.m.

RGU Decision: Monday, March 19, 2012. City Council meeting begins at 7:00 p.m.

RGU: City of North Mankato

Contact Person: Michael Fischer
City Planner
Community Development
City of North Mankato
1001 Belgrade Ave
North Mankato, MN 56003

Phone: 507-625-4141

Fax: 507-625-4151

E-mail: michaelf@northmankato.com

Northport Substation and 115 kV transmission line



GREAT RIVER ENERGY
12300 Elm Creek Boulevard
Maple Grove, MN 55369-4718
1-888-521-0130
www.greatriverenergy.com



BENCO ELECTRIC COOPERATIVE
20946 – 549 Avenue, PO Box 8
Mankato, MN 56002-0008
1-888-792-3626
www.benco.coop

Project Need:

Electrical Load growth in the North Mankato area is greater than recent projections anticipated and, with several additional loads in the planning stages, is estimated to continue to grow in the near future. To reliably serve these loads, an electrical distribution substation is needed in the area of North Mankato and Belgrade Township.

Project Goal/Description:

Construct a 115 kV distribution substation (“Northport Substation,” see Figure 1) and approximately 1.1 miles of 115 kV double circuit transmission line (see Figure 2) to support that substation. The location of proposed Northport Substation is approximately 1/3 of a mile north of the existing end of Ringhofer Drive (see Project Map on back). This will result in improved electrical reliability, provide contingency support for the Johnson and Penelope substations and supply a strong second-source to serve, and back-up, electrical demands in the North Mankato area.

The new 115 kV transmission line will consist of six energized conductors attached to horizontal post insulators on galvanized steel poles. Grounded shield wire will be attached at the top of each pole for lightning protection. It is estimated that typical pole heights will range from 70 to 90 feet above the ground, and the distance between poles will range from 350 to 450 feet depending on terrain and physical features. All energized substation equipment is located inside a chain link fence providing safety and security.

Schedule:

Local/State Permitting: -----1st Quarter 2012
Footings/Foundations: -----Spring 2012
Transmission Line Construction-----Late Summer / Fall 2012
Project Completion -----November 2012



Figure 1
Typical 115 kV distribution substation

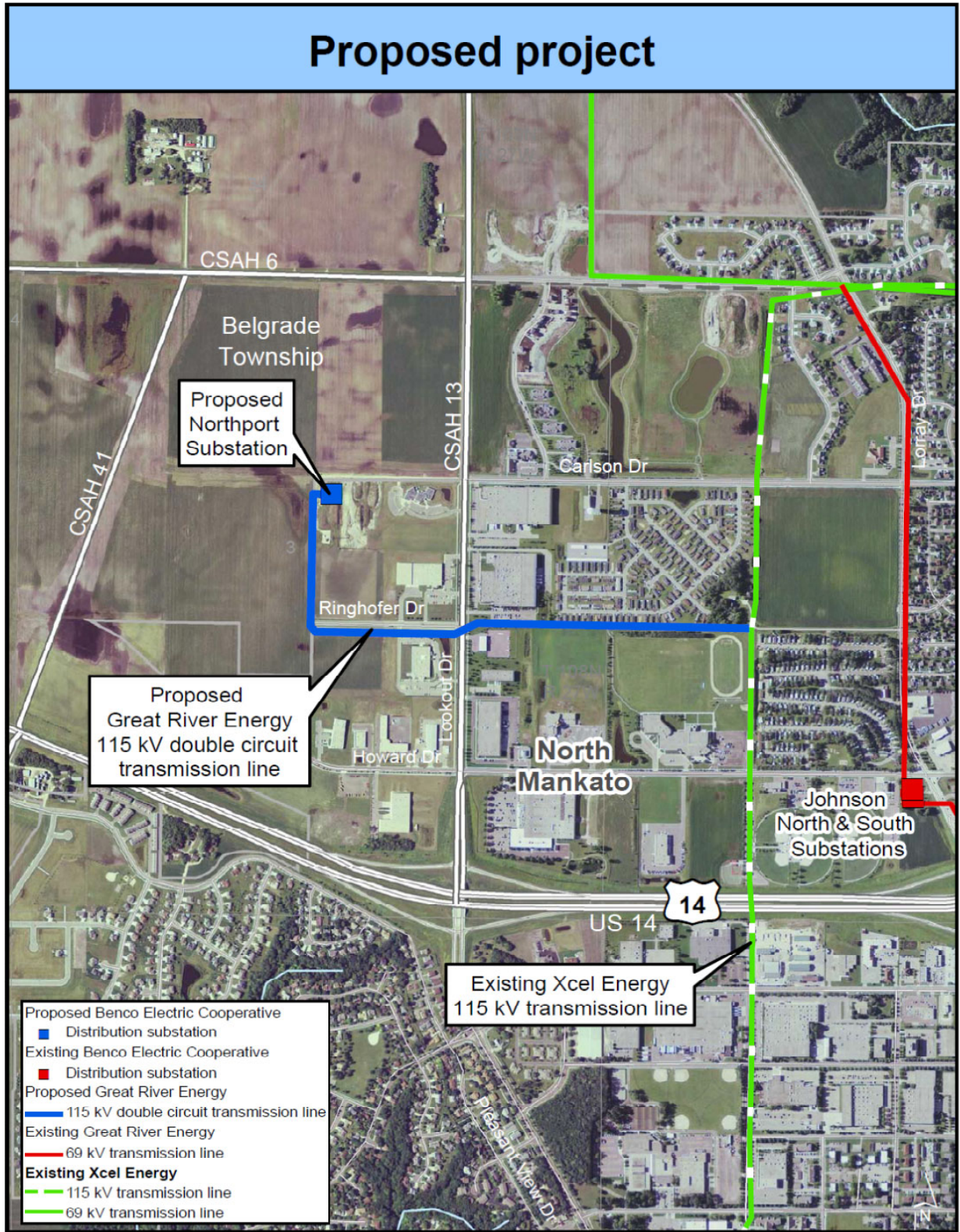


Figure 2
Typical 115 kV structure

For project updates and information, visit greatriverenergy.com/northport or contact:

Peter Schaub
Great River Energy
12300 Elm Creek Boulevard
Maple Grove, MN 55369-4718
763-445-5976
1-888-521-0130 ext. 5976
pschaub@GREnergy.com

Dick Hiniker
Benco Electric Cooperative
20946 549th Avenue, P.O. Box 8
Mankato, MN 56002-0008
507-387-7963
1-888-792-3626
dick.hiniker@benco.coop



**MINNESOTA DEPARTMENT OF COMMERCE
ENERGY FACILITY PERMITTING**

**NOTICE OF DRAFT SITE PERMIT ISSUANCE AND
PUBLIC INFORMATION MEETING**

**In the Matter of the Application of CWS Wind Farm, LLC for
a Large Wind Energy Conversion System Site Permit for the 30.75 MW
Community Wind South Project in Nobles County**

PUC Docket Number: IP-6871/WS-11-863

PLEASE TAKE NOTICE that Minnesota Department of Commerce, Energy Facility Permitting (EFP) staff will hold a public information meeting on the application of CWS Wind Farm, LLC to the Minnesota Public Utilities Commission (Commission) for a site permit to build and operate the Community Wind South Project, a 30.75 megawatt (MW) large wind energy conversion system (LWECS) in Nobles County (see accompanying map).

PUBLIC INFORMATION MEETING

Monday, March 5, 2012 – 2:00 p.m.*

at

**Reading Community Center
McCall Ave and 200th Street
Reading, MN**

***Preceded by an open house from 1:30 to 2:00 p.m. hosted by the Applicant**

The purpose of the meeting is to provide information about the project and solicit public comments regarding the site permit application submitted by CWS Wind Farm, LLC and the draft site permit issued by the Commission. EFP staff will provide an overview of the state's wind energy site permitting process and the draft site permit. Representatives of CWS will also be present to answer questions about the proposed project.

EFP staff will accept written comments on the site permit application and draft site permit until 4:30 p.m. on March 23, 2012. Please include PUC Docket No. IP-6871/WS-11-863 on all comments. Comments should be mailed, emailed, or faxed to:

Larry B. Hartman
State Permit Manager
Minnesota Department of Commerce
85 7th Place East, Suite 500
St. Paul, Minnesota, 55101-2198
Fax: 651-297-7891
larry.hartman@state.mn.us

Comments may also be submitted on the Commission's energy facility permitting website at <http://www.energyfacilities.puc.state.mn.us>.

Project Description: The proposed Community Wind South Project site encompasses 3,080 acres and is located in Nobles County in the townships of Summit Lake (Sections 17-20, 30) and Larkin (Sections 13, 23-24), approximately two miles south of Wilmont. CWS proposes to install 15 REpower 2.05MW turbines (model MM92) for a rated nameplate capacity of 30.75 MWs. The wind turbines will be placed on top of free-standing tubular steel towers up to 100 meters (328 feet) tall. The three bladed rotor assemblies will be 92.5 meters (303.5 feet) in diameter.

Underground electrical cables and supervisory control and data acquisition (SCADA) fiber optic lines for communication purposes will connect the turbines. Other associated facilities include gravel access roads to the turbines, pad mounted transformers, a fenced-in project collection yard, two sets of underground electrical cable (34.5 kV) extending approximately 3.8 miles from the CWS project collector yard to the Nobles substation owned by NSP, and a permanent free standing meteorological tower. The applicant's goal is to achieve commercial operation by October 1, 2012.

Review Process. EFP staff, on behalf of the Commission, is initiating the permit review process for this project under the Wind Siting Act (Minnesota Statutes 216F) and the Wind Permitting Rules (Minnesota Rules 7854).

CWS Wind Farm, LLC filed a site permit application with the Commission on October 17, 2011. The Commission accepted the site permit application as complete on November 4, 2011.

EFP staff solicited comments on issues to be considered in developing a draft site permit for this project, and prepared a draft site permit for consideration by the Commission. On February 6, 2012, the Commission approved the draft site permit for distribution and public comment (Minn. Rules 7854.0900). Upon completion of the comment period, EFP staff will present the record of this matter to the Commission for a final permit decision. Under the LWECs siting process, environmental review is incorporated into the development of the site permit application and the site permit itself; there is no separate environmental review document prepared on the project.

Contested Case Hearing Request. Any person may request a contested case hearing on the site permit proceeding for the CWS Project pursuant to Minnesota Rules 7854.0900. All contested case hearing requests must be filed in writing with the EFP state permit manager by **March 23, 2012**.

A person requesting a contested case hearing must list the issues sought to be addressed in the hearing and the reason why a contested case hearing is required to resolve those issues. The Commission shall order a contested case hearing if it finds that a material issue of fact has been raised and that the holding of the contested case hearing will aid the Commission in making a final decision on whether to authorize construction of the project.

Eminent Domain. CWS Wind Farm, LLC does not have the power of eminent domain to acquire the land or wind rights for the project. Wind and land rights necessary to build the project must be in the form of voluntary easements or lease agreements between individual landowners and CWS Wind Farm, LLC.

Project Documents. Electronic versions of the draft site permit, draft avian and bat protection plan documents, site permit application and other documents relevant to the proposed Project are available on the Commission's energy facility permitting website: <http://energyfacilities.puc.state.mn.us/Docket.html?Id=32306> and on the Commission's eDocket website at: <https://www.edockets.state.mn.us/EFiling/search.jsp> (enter the year "11" and the number "863").

The draft site permit, draft avian and bat protection plan documents and the site permit application are available for review at the locations noted below:

Nobles County Library 407 12th St Worthington, MN 56187	City Office in Wilmont 316 4 th Avenue Wilmont, MN 56185
Nobles County Auditor's Office 315 Tenth Street Worthington, MN 56187	Clerks in Summit Lake and Larkin Townships

Mailing List. Persons interested in adding their names to the EFP mailing list for this project should contact the state permit manager or the public advisor, or register online at: <http://energyfacilities.puc.state.mn.us>.

Project Contacts and Information. If you have questions or if you would like further information about this project, please contact:

Larry Hartman, State Permit Manager
 Minnesota Department of Commerce
 85 7th Place East, Suite 500
 St. Paul, MN 55101
 (651) 296-5089
 Fax: 651-297-7891
larry.hartman@state.mn.us

Jamie MacAlister, Public Advisor
 Minnesota Department of Commerce
 85 7th Place East, Suite 500
 St. Paul, MN 55101
 (651) 297-1335
jamie.macalister@state.mn.us

Questions about the project and site permit application can also be directed to the applicant by contacting Aaron Peterson, at 206-491-0493 or peter@juwi.com.

This document can be made available in alternative formats (i.e., large print or audio) by calling 651-296-0391 (voice). Persons with hearing or speech disabilities may call us through Minnesota Relay at 1-800-627-3529 or by dialing 711.

