



Publication Date: January 23, 2012
Vol. 36, No. 2 – CORRECTED

Next Publication: February 6, 2012
Submittal Deadline: January 30
Submit to EQB.Monitor@state.mn.us

This corrected *EQB Monitor* includes the following additional notices:

- Environmental Assessment for the Shoal Lake 115 kV Substation and Transmission Line
- Notification of Genetically Engineered Organisms file number 12-NO-004

Subscribe to receive the EQB Monitor. If you would like to receive the Monitor regularly, please subscribe at <http://www.eqb.state.mn.us/monitor.html>.

Update your contact information! As your e-mail address changes, please ensure delivery by updating your contact information routinely at <http://www.eqb.state.mn.us/monitor.html>.

EQB MONITOR

NOTICE OF PUBLIC MEETING AND EXTENSION OF COMMENT PERIOD

The Minnesota Pollution Control Agency (MPCA) will conduct a public information meeting on the Draft Air Emission Permit No. 05300480-003 and the Environmental Assessment Worksheet (EAW) on the proposal by Northern Metals, LLC for a Major Amendment to that permit. The Northern Metals facility is located at 2800 Pacific Street North, Minneapolis, Hennepin County, Minnesota.

The public information meeting will take place on February 28, 2012, from 6:30 p.m. to 9:00 p.m. in the First Floor Meeting Room in the headquarters of the Minneapolis Parks and Recreation Board at 2117 West River Road. The meeting will begin at 6:30 p.m. with an informal open house, followed at 7:00 p.m. by a brief MPCA presentation. A question-and-answer session on the Draft Air Emission Permit and EAW will follow the presentation, and the meeting will end at 9:00 p.m. The primary purpose of this public meeting is informational in nature, but comment forms will be available for those who wish to submit written comments. These forms may be either turned in to MPCA staff at the meeting or mailed in later.

The *EQB Monitor* is a biweekly publication of the Environmental Quality Board that lists descriptions and deadlines for Environmental Assessment Worksheets, Environmental Impact Statements, and other notices. The *EQB Monitor* is posted on the Environmental Quality board home page at <http://www.eqb.state.mn.us/>.

Upon request, the *EQB Monitor* will be made available in an alternative format, such as Braille, large print, or audio tape. For TTY, contact Minnesota Relay Service at 800-627-3529 and ask for Department of Administration. For information on the *EQB Monitor*, contact:

Minnesota Environmental Quality Board
520 Lafayette Road – 4th Floor
St. Paul, MN 55155-4194
Phone: 651-757-2873
Fax: 651-297-2343
<http://www.eqb.state.mn.us>

The MPCA has also reopened the public comment period for both the draft Air Emission Permit and the EAW. The reopened public comment period will end at 4:30 p.m. on Wednesday, March 14, 2012. Only timely written comments will be considered. Evidence of timely receipt includes: (a) a date/time stamp imprinted by MPCA support staff on the first page of a written comment letter; (b) the date and time printed on a fax; or (c) the date and time of an e-mail.

Comments on the Draft Air Emissions Permit and the EAW should be in writing and sent to:

William Lynott
Environmental Review Unit – 4th Floor
Resource Management and Assistance Division
Minnesota Pollution Control Agency
520 Lafayette Road North, St. Paul, MN 55155-4194
william.lynott@state.mn.us

Comments already submitted on the Northern metals permit and EAW should not be resubmitted, **with the exception of comments sent to MPCA after the close of the initial public comment periods.**

A copy of the draft permit is available on the MPCA's website at www.pca.state.mn.us/news/data/index.cfm?PN=1, or can be mailed in hard copy to any interested person upon the MPCA's receipt of a written request. The EAW is available on the MPCA's website at <http://www.pca.state.mn.us/index.php/view-document.html?gid=16378>. Additional materials relating to the draft permit and EAW are available for inspection by appointment at the MPCA, 520 Lafayette Road North, St. Paul, Minnesota, 55155-4194, telephone 651-757-2667, between the hours of 8:00 a.m. and 4:30 p.m., Monday through Friday. All MPCA offices may be reached by calling 1-800-657-3864.

Questions about the public information meeting and the reopened public notice should be directed to:

Ralph Pribble
Public Information Officer – 6th Floor
Minnesota Pollution Control Agency
520 Lafayette Road North
St. Paul, MN 55155-4194
651-757-2657
Fax: 651-297-8687
ralph.pribble@state.mn.us

ENVIRONMENTAL ASSESSMENT AVAILABLE

Project Title: Shoal Lake 115 kV Substation and Transmission Line

Description: Great River Energy and Lake Country Power have determined that a new 115 kilovolt (kV) substation and transmission line are needed to meet the growing electrical needs in the area near Nashwauk in Itasca County, Minnesota (see the following fact sheet/map).

Lake Country Power proposes to construct the new “Shoal Lake” 115 kV Substation in Section 4, T57N, R23W just south of County State Aid Highway (CSAH) 56 in Nashwauk Township (see photo of typical substation on fact sheet).

Great River Energy, power supplier to Lake Country Power, proposes to construct approximately 7.75 miles of new overhead 115 kV transmission line to energize this new substation. The first five miles of transmission line will be double circuited with a new Minnesota Power 230 kV transmission line that will exit the new Minnesota Power McCarthy Lake Substation and run north through Sections 25, 24, 13, 12 and 1 of Nashwauk Township. Minnesota Power will own the transmission structures and the 230 kV circuit, and Great River Energy will own the 115 kV circuit that will be strung on the same poles. The 230 kV line was permitted through the Minnesota Public Utilities Commission and an Environmental Impact Statement was prepared for the line.

Great River Energy will construct approximately 2.75 miles of new 115 kV transmission line west along CSAH 56 to the Shoal Lake Substation (Sections 1 and 4, Nashwauk Township; Sections 33-36, Unorganized). The line will be constructed using wood poles with horizontal post insulators. When practical, Lake Country Power will attach an upgraded distribution system on wood crossarms (see photo on fact sheet). The poles will generally be 65-75 feet above ground with a 280-400 foot span between poles.

The Environmental Assessment (EA) for the proposed 115 kV Substation and Transmission Line entitled Shoal Lake Project is available for review by contacting the Itasca County Environmental Services Department, 123 NE 4th Street, Grand Rapids, MN 55744 or on the Itasca County Web at <http://www.co.itasca.mn.us> – click on Environmental Services.

Comments may be submitted to the Environmental Services Department at the address below, or to don.dewey@co.itasca.mn.us, or Fax: 218-327-7331.

Comment Period Deadline: February 1, 2012

RGU Decision: Tuesday, February 14, 2012. County Board meeting begins at 3:00 p.m.

RGU: Itasca County

Contact Person: Don Dewey
Environmental Services Administrator
Itasca County Environmental Services
Itasca County Courthouse
123 NE 4th Street
Grand Rapids, MN 55744

Phone: 218-327-2857

Fax: 218-327-7331

Email: don.dewey@co.itasca.mn.us

Shoal Lake 115 kV substation and transmission line



GREAT RIVER ENERGY
12300 Elm Creek Boulevard
Maple Grove, MN 55369
1-888-521-0130
www.greatriverenergy.com



LAKE COUNTRY POWER
2810 Elida Drive
Grand Rapids, MN 55744
1-800-421-9959
www.lakecountypower.com

Project Need

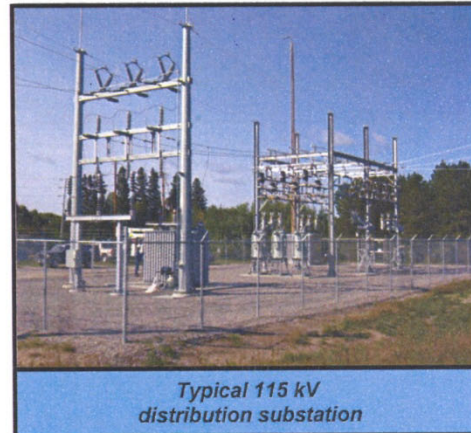
Lake Country Power members north of the City of Nashwauk are currently served by two substations. These substations are energized by a 23,000 volt (23 kV) transmission line built in 1958. This system can no longer support growth or the increasing demand for electric service and at times experiences low voltages.

To increase capacity and improve the electrical service, Lake Country Power will build a new substation in Nashwauk Township. The substation will be energized by a new 115 kV transmission line built by Great River Energy, power supplier to Lake Country Power. The new substation and transmission line will provide a long-term solution to the area's electric needs. The two existing substations will be retired and their electric loads transferred into the new substation.

Substation and Transmission Line

Lake Country Power will construct the new "Shoal Lake" Substation (similar to that shown right) on County Highway 56, approximately 3.5 miles west of Minnesota Highway 65 in Nashwauk Township. The substation will be fed by the new transmission line and contain a transformer that will lower the voltage to distribution levels. This substation location was chosen to bring a strong electric source to the middle of the demand area.

Great River Energy will build approximately 7.75 miles of new 115 kV transmission line to energize the Shoal Lake Substation (see map on back). The new 115 kV transmission line will tap the Minnesota Power 115 kV "28" Line (that is to be relocated near the new McCarthy Lake Substation at the corner of Hilltop Road and County Highway 58). For the first five miles Minnesota Power and Great River Energy will construct a double circuit 230/115 kV transmission line sharing common poles. At County Highway 56, Great River Energy's 115 kV transmission line will turn west and parallel the highway for 2.75 miles to the new substation. Where practical, the new line will overtake the existing Lake Country Power distribution system along Highway 56.



*Typical 115 kV
distribution substation*

Poles and Construction

Great River Energy will construct the new line along County Highway 56 using wood poles with horizontal post insulators. The poles will generally be 65-75 feet above ground with a 280-400 foot span between poles. The shorter spans are necessary where Great River Energy overtakes Lake Country Power's distribution system. Where the distribution system is overtaken the distribution line will be attached to the transmission poles on wood crossarms (see photo). Guy wires and anchors will be used to counter angles in the line.

Schedule

Permitting – Fall 2011

Survey/Easement Acquisition/Engineering – Winter 2011-12

Construction – 2012-2013

For project updates and information, visit greatriverenergy.com/ShoalLake or contact:

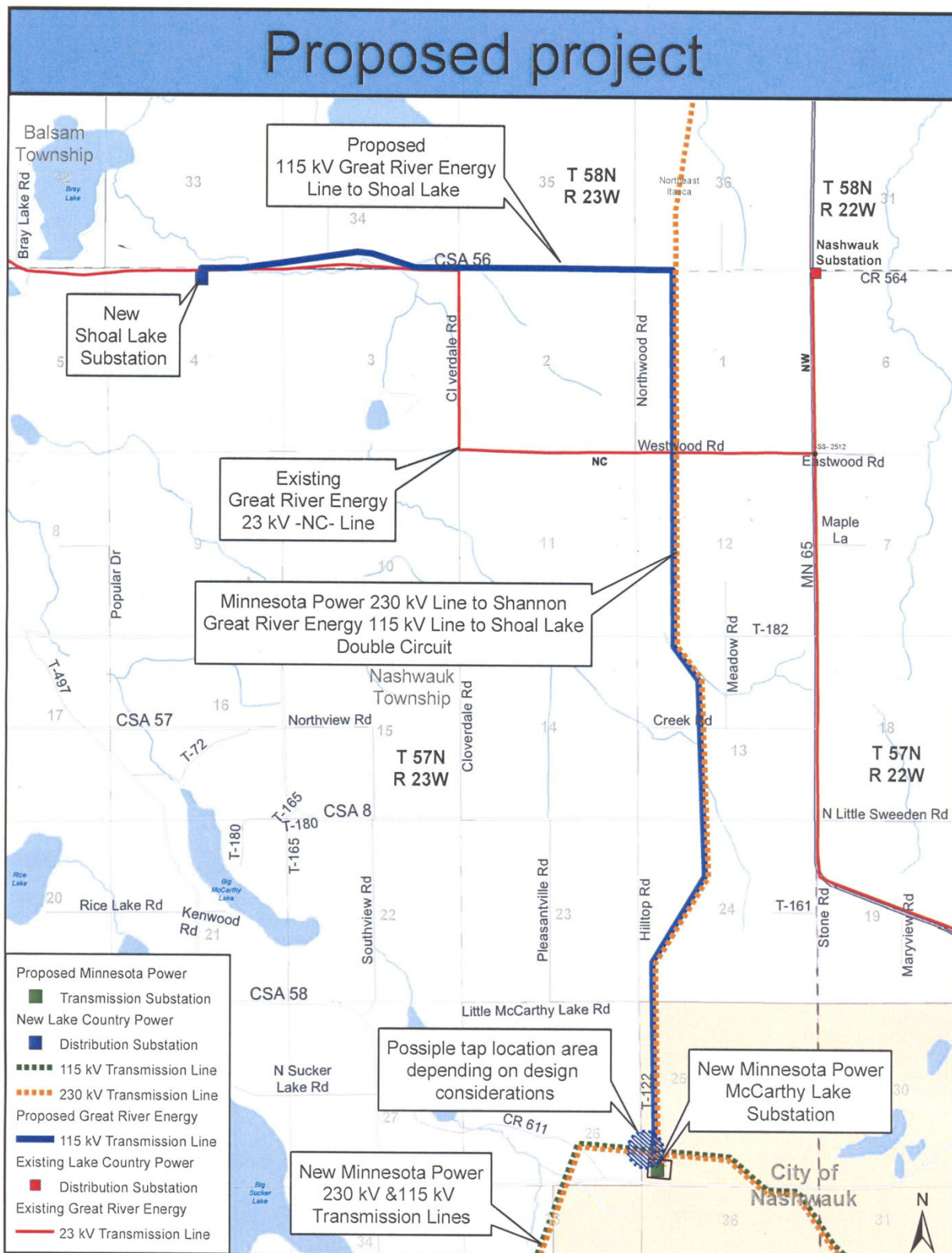
Dale Aukee, Sr. Field Representative
Great River Energy
763-445-5978
or 1-888-521-0130, ext. 5978
dauke@greenergy.com

Derek Howe
Lake Country Power
218-326-7178
or 1-800-421-9959
dhowe@lakecountypower.com



*Typical 115 kV
transmission line
with distribution
underbuild*

Date last revised: 9/15/2011



EIS NEED DECISIONS

The responsible governmental unit has determined the following projects do not require preparation of an EIS. The dates given are, respectively, the date of the determination and the date the EAW notice was published in the *EQB Monitor*.

- Minnesota Department of Natural Resources, Minnesota Falls Dam Removal Project in Yellow Medicine and Chippewa Counties, September 27, 2011 (June 27, 2011)

AUAR UPDATE AVAILABLE

Project Title: Target North Campus

Description: The 2012 Update to the AUAR for the 136 acre Target North Campus located in Brooklyn Park, MN, proposes an additional 200,000 square feet of office over and above the 2005 approved AUAR Update. The proposed 2012 AUAR Update studies 1,700,000 SF of office, 300,000 SF of commercial and 130,600 SF of technical/data support buildings. This 2012 AUAR Update is consistent with the approved Mixed Use Comprehensive land use plan and the approved PUD zoning for the property.

The 10-day formal review period for this AUAR Update will conclude on February 3, 2012.

RGU: City of Brooklyn Park

Contact Person: Todd Larson
City of Brooklyn Park
5200 85th Avenue North
Brooklyn Park, MN 55443
Phone: 763-424-8000
Fax: 763-493-8391
Email: todd.larson@brooklynpark.org

NOTICES

MINNESOTA DEPARTMENT OF AGRICULTURE

Notification of Releases of Genetically Engineered Organisms

File Number	Company	Crop	Project	County
12-NO-004	Pioneer Hi-Bred International	Soybean	Marker genes	Blue Earth (2), Clay, Otter Tail, Redwood
12-NO-007	Pioneer Hi-Bred International	Soybean	Herbicide Tolerant Insect Resistant	Fillmore, Freeborn (2), Norman, Steele
12-NO-008	Pioneer Hi-Bred International	Corn	Herbicide Tolerant Insect Resistant	Fillmore, Freeborn (2), Norman, Steele

For more information contact Tina Seeland, Minnesota Department of Agriculture, 625 Robert St N., St. Paul, MN 55155, 651-201-6404, tina.seeland@state.mn.us.

**MINNESOTA DEPARTMENT OF COMMERCE
ENERGY FACILITY PERMITTING**

NOTICE OF PUBLIC INFORMATION AND SCOPING MEETING

**In the Matter of the Certificate of Need Application for the
Black Oak Wind and the Getty Wind Projects**

PUC Docket Number: IP6853, 6866/CN-11-471

PLEASE TAKE NOTICE that Minnesota Department of Commerce Energy Facility Permitting (EFP) staff will conduct a public information and environmental report scoping meeting on the certificate of need application by Black Oak Wind, LLC (Black Oak) and Getty Wind, LLC (Getty) (collectively the Applicants) to the Minnesota Public Utilities Commission (Commission) for an up to 82 megawatt (MW) wind farm (Project). The purpose of the meeting is to provide information about the Project and to identify issues and alternatives to study in the environmental report (ER) that will be prepared by EFP staff.

PUBLIC INFORMATION AND SCOPING MEETING

Thursday, January 26, 2011 – 6:00 p.m.

Sauk Centre City Hall
320 Oak Street South
Sauk Centre, Minnesota 56378

EPF staff will accept written comments on the scope of the ER until Wednesday, February 15, 2012. Please include PUC Docket No. **IP6853, 6866/CN-11-471** on all comments. Comments should be mailed, emailed, or faxed to:

Suzanne Steinhauer
State Permit Manager
Minnesota Department of Commerce
85 7th Place East, Suite 500
St. Paul, Minnesota, 55101-2198
Fax: 651-296-2888
suzanne.steinhauer@state.mn.us

Comments may also be submitted on the Commission's energy facility permitting website,
<http://www.energyfacilities.puc.state.mn.us>.

The meeting will include a brief presentation of the state's certificate of need process, the Project, and how the public can participate in the certificate of need process. Representatives from Black Oak and Getty will be present to answer questions about the proposed project. Members of the public will have an opportunity to ask questions, present comments, and propose issues, impacts, and alternatives to be studied in the ER.

Project Description. The proposed Project is comprised of two adjacent large wind energy conversion system (LWECS) projects located in Stearns County, approximately 5 miles southwest of Sauk Centre (see accompanying map).

Black Oak Wind, LLC proposes to construct the Black Oak Wind Farm on a site comprised of approximately 7,100 acres of agricultural land in Ashley and Raymond townships. Depending upon final layout, approximately 13.5 to 20 acres would be converted to turbines and associated infrastructure.

Getty Wind Company, LLC proposes to construct the Getty Wind Project on a site comprised of approximately 7,360 acres of agricultural land in Sauk Centre and Getty townships. Depending upon final layout, approximately 18 to 32 acres of agricultural land would be permanently converted to turbines and associated infrastructure.

Applicants are considering turbines with tower heights ranging from 262 to 328 feet (80 to 100 meters), with rotor diameters of 270 to 367 feet (82.5 to 112 meters), for a total height of 397 to 492 feet (121 to 150 meters). The Project would also include installation of electric feeder and collection lines, an operations and maintenance facility, permanent meteorological towers, and a substation. Applicants intend to seek a permit from Stearns County for a 69 kV transmission line to connect the Project substation with Xcel's Black Oak Substation.

The Applicants plan to construct the Project by December 31, 2012.

Review Process. Three separate Commission approvals are required for the proposed Project – a certificate of need (CON) for the Project and separate site permits for the Black Oak Wind Farm and the Getty Wind Project. A certificate of need application for the Project was filed jointly by Black Oak and Getty on October 11, 2011. Black Oak filed a site permit application with the Commission in January 2011 (Docket No. IP6583/WS-10-1240). Getty filed a site permit application with the Commission on October 11 and 12, 2011 (Docket No. IP6866/WS-11-831).

The certificate of need and site permit applications are being reviewed separately by the Commission. Site permits for the Black Oak Wind Farm and the Getty Wind Project cannot be issued prior to a determination by the Commission that the Project is needed (Minn. Rules 7854. 0500, subp. 2(A)). The Commission's CON process is the only process in which a no-build alternative and the size, type, timing, system configuration, and voltage of the proposed project and alternatives will be considered.

EFP staff is responsible for conducting the environmental review for certificate of need applications submitted to the Commission (Minn. Rules 7849). This review requires the preparation of an ER for the Project. An ER examines the potential human and environmental impacts of a proposed project, alternatives to the proposed project, and potential mitigative measures. EFP staff conducts a public information meeting to gather comments and suggestions on the proposed project in order to focus the content or "scope" of the ER.

Upon completion of the ER, a public hearing will be held in the project area. The hearing will be presided over by an administrative law judge (ALJ) from the Office of Administrative Hearings. Members of the public will have an opportunity to speak at the hearing, present evidence, ask questions, and submit comments. Notice of the public hearing will be published in local newspapers and mailed to persons who register their names on the project mailing list (see below).

Upon completion of the environmental review and hearing process, the record compiled for the CON application will be presented to the Commission for a final decision. A decision by the Commission on a certificate of need for the project is anticipated sometime in late spring or early summer 2012.

Eminent Domain. Neither Black Oak Wind, LLC, nor Getty Wind, LLC, has the power of eminent domain to acquire the land or wind rights for the Project. Wind and land rights necessary to build the facilities must be in the form of voluntary easements or lease agreements between individual landowners and the Applicants.

Project Mailing List. Persons should contact the state permit manager or public advisor (noted below) or register online at: www.energyfacilities.puc.state.mn.us to get their name on the project mailing list. Persons on the mailing list will receive notices of meetings and notices of document availability for this project. If you do not register to be on the mailing list you will not receive correspondence regarding this project after this notice. Project mailing list registration is voluntary and may be done at any time.

Project Documents. A more detailed description of the proposed project is contained in the certificate of need application. An electronic version of this document is available on the Commission's energy facility permitting website: <http://energyfacilities.puc.state.mn.us/Docket.html?Id=32459>. Additionally, documents are available on the Commission's eDockets system: <https://www.edockets.state.mn.us/EFiling/search.jsp> (enter the year "11" and the number "471").

The certificate of need application is also available at the locations noted below:

<p>Great River Regional Library Bryant Library 430 Main Street South Unit 1 Sauk Centre, MN 56378</p>	<p>City Office in Sauk Centre City Hall 320 Oak Street South Sauk Centre, MN 56378</p>
<p>Stearns County Auditor's Office 705 Courthouse Square Room 148 St. Cloud, MN 56303-4701</p>	

Project Contacts. If you have questions or would like further information about this project, please contact:

Department of Commerce – Environmental Review

Suzanne Steinhauer, State Permit Manager
Minnesota Department of Commerce
85 7th Place East, Suite 500
St. Paul, MN 55101-2198
(651) 296-2888
suzanne.steinhauer@state.mn.us

Ray Kirsch, Public Advisor
Minnesota Department of Commerce
85 7th Place East, Suite 500
St. Paul, MN 55101-2198
(651) 296-7588
raymond.kirsch@state.mn.us

Public Utilities Commission – Certificate of Need Process

Tricia DeBleeckere
Minnesota Public Utilities Commission
121 7th Place East
St. Paul, MN 55101
651-201-2254
tricia.debleeckere@state.mn.us,

Bret Eknes
Minnesota Public Utilities Commission
121 7th Place East
St. Paul, MN 55101
651-201-2236
bret.eknes@state.mn.us.

Applicant

Patrick Smith
Black Oak Wind, LLC/
Geronimo Wind Energy, LLC
7650 Edinborough Way, Suite 725|
Edina, Minnesota 55435
952-988-9000

Roland Jurgens
Getty Wind Company, LLC
P.O. Box 321
Chokio, MN 56221
320-324-7122

Christina K. Brusven
Fredrikson & Byron, P.A.
200 South Sixth Street,
Suite 4000
Minneapolis, MN 55402
612-492-7412

This document can be made available in alternative formats (i.e., large print or audio) by calling 651-296-0391 (voice). Persons with hearing or speech disabilities may call us through Minnesota Relay at 1-800-627-3529 or by dialing 711.

