



Publication Date: August 8, 2011  
Vol. 35, No. 16

Next Publication: August 22, 2011  
Submittal Deadline: August 15, 2011  
Submit to [EQB.Monitor@state.mn.us](mailto:EQB.Monitor@state.mn.us)

Next EAW Comment Deadline: September 7, 2011

## EAW Deadline Clarification

On August 1, 2011, the EQB published a special edition of the Monitor to facilitate a timely posting of announcements in the period following the State government shutdown service interruption. The EAW comment deadline for the August 1, 2011 Monitor should be August 31, 2011. Thank you.

**EQB MONITOR**

The *EQB Monitor* is a biweekly publication of the Environmental Quality Board that lists descriptions and deadlines for Environmental Assessment Worksheets, Environmental Impact Statements, and other notices. The *EQB Monitor* is posted on the Environmental Quality board home page at <http://www.eqb.state.mn.us/>.

Upon request, the *EQB Monitor* will be made available in an alternative format, such as Braille, large print, or audio tape. For TTY, contact Minnesota Relay Service at 800-627-3529 and ask for Department of Administration. For information on the *EQB Monitor*, contact:

Minnesota Environmental Quality Board  
658 Cedar St., 300 Centennial Office Building  
St. Paul, MN 55155-1388  
Phone: 651-201-2480  
Fax: 651-296-3698  
<http://www.eqb.state.mn.us>

**NOTICE****STATE OF MINNESOTA  
Department of Commerce****NOTICE OF DRAFT SITE PERMIT ISSUANCE  
AND  
PUBLIC INFORMATION MEETING****In the Matter of the Site Permit Application of Shell Rock Wind Farm, LLC  
for a Large Wind Energy Conversion System in Freeborn County****PUC Docket Number: IP-6858/WS-11-195**

**PLEASE TAKE NOTICE** that Minnesota Department of Commerce, Energy Facility Permitting will hold a public information meeting on the application of Shell Rock Wind Farm, LLC to the Minnesota Public Utilities Commission for a site permit to build and operate a Large Wind Energy Conversion System (LWECS) of 44 megawatts (MW) in Freeborn County.

---

**Wednesday, August 24, 2011  
6:30 p.m.**

at

**America's Best Value Inn  
Event Center  
2306 East Main Street  
Albert Lea, MN 56007**

---

The purpose of the public meeting is to provide information and solicit public comments regarding the proposed Shell Rock Wind Farm and the Draft Site Permit issued by the Minnesota Public Utilities Commission (Commission). Shell Rock Wind Farm, LLC (Shell Rock Wind) is a subsidiary of the Minnesota Municipal Power Agency (MMPA). Energy Facility Permitting (EFP) staff will provide an overview of the state's wind energy site permitting process and the Draft Site Permit. Representatives from Avant Energy, Inc., the agent for MMPA, will be present to answer questions about the proposed project.

**Public Comments.** In addition to receiving comments at the public meeting, EFP staff will also accept written comments on the Draft Site Permit until **4:30 p.m., Monday, September 12, 2011**. Please include Docket Number IP-6858/WS-11-195 on your comments. Comments can be mailed, emailed, or faxed to the EFP State

Permit Manager identified below. Comments can also be entered on the Commission's website at <http://energyfacilities.puc.state.mn.us>.

**Proposed Site Location.** The proposed Shell Rock Wind Farm (Project) is located in Freeborn County in the township of Pickerel Lake, located approximately three miles west of Albert Lea and immediately east of Conger. The site encompasses 7,433 acres.

**Project Description.** Shell Rock Wind proposes to install between 24 and 29 wind turbine generators depending on what turbines are ultimately selected. Turbines under consideration are General Electric 1.5 xle turbines, which have a rotor diameter of 271 feet (82.5 meters) and total height of 397 feet (121 meters), and Vestas V90 1.8 MW turbines, which have a rotor diameter of 295 feet (90 meters) and total height of 410.1 feet (125 meters). Associated facilities include gravel access roads, pad mounted step-up transformers, electrical collector and feeder lines, Supervisory Control and Data Acquisition (SCADA) communication lines, a substation, and a permanent meteorological tower. Shell Rock Wind's goal is to achieve commercial operation by December 31, 2012.

**Commission Review Process.** EFP staff, on behalf of the Commission, is initiating the permit review process for this project under the Wind Siting Act (Minnesota Statutes chapter 216F) and the Wind Permitting Rules (Minnesota Rules chapter 7854).

Shell Rock Wind filed a site permit application for the 44 MW LWECs in Freeborn County with the Commission on March 15, 2011. The Commission issued an order accepting the site permit application on April 15, 2011.

EFP staff solicited comments on issues to be considered in developing a Draft Site Permit for this project until May 13, 2011. EFP staff prepared a Draft Site Permit for consideration by the Commission. On June 24, 2011, the Commission issued an order approving the Draft Site Permit for distribution and public comment and authorized EFP staff to implement the public participation process outlined in Minnesota Rules 7854.0900. Upon completion of this process, EFP staff will present the record of this matter to the Commission for a final permit decision. Under the LWECs siting process, environmental review is incorporated into the development of the site permit application and the site permit itself; there is no separate environmental review document prepared on the project.

**Contested Case Hearing Request.** Any person may request a contested case hearing on the site permit proceeding for the Shell Rock Wind Farm pursuant to Minnesota Rules 7854.0900. All contested case hearing requests must be filed in writing with the EFP State Permit Manager by **4:30 p.m., Monday, September 12, 2011.**

The person requesting the contested case hearing must list the issues sought to be addressed in the hearing and the reason why a contested case hearing is required to resolve those issues. The Commission shall order a contested case hearing if it finds that a material issue of fact has been raised and that the holding of the contested case hearing will aid the Commission in making a final decision on whether to authorize construction of the project.

**Project Documents.** Electronic versions of the site permit application, the draft site permit and other documents relevant to this matter are available on the Commission's website:

<http://energyfacilities.puc.state.mn.us/Docket.html?Id=31974> and on the Department of Commerce's eDocket website at: <https://www.edockets.state.mn.us/EFiling/search.jsp> (enter the docket number 11-195).

A hard copy of the site permit application and Draft Site Permit are also available for review at the Albert Lea Public Library, the auditor's office in Freeborn County, city offices in Conger, Albert Lea and Alden, and the township clerk of Pickerel Lake.

**Mailing List.** Persons interested in adding their names to the EFP mailing list for this Project should contact the state permit manager or the public advisor, or register online at: <http://energyfacilities.puc.state.mn.us>.

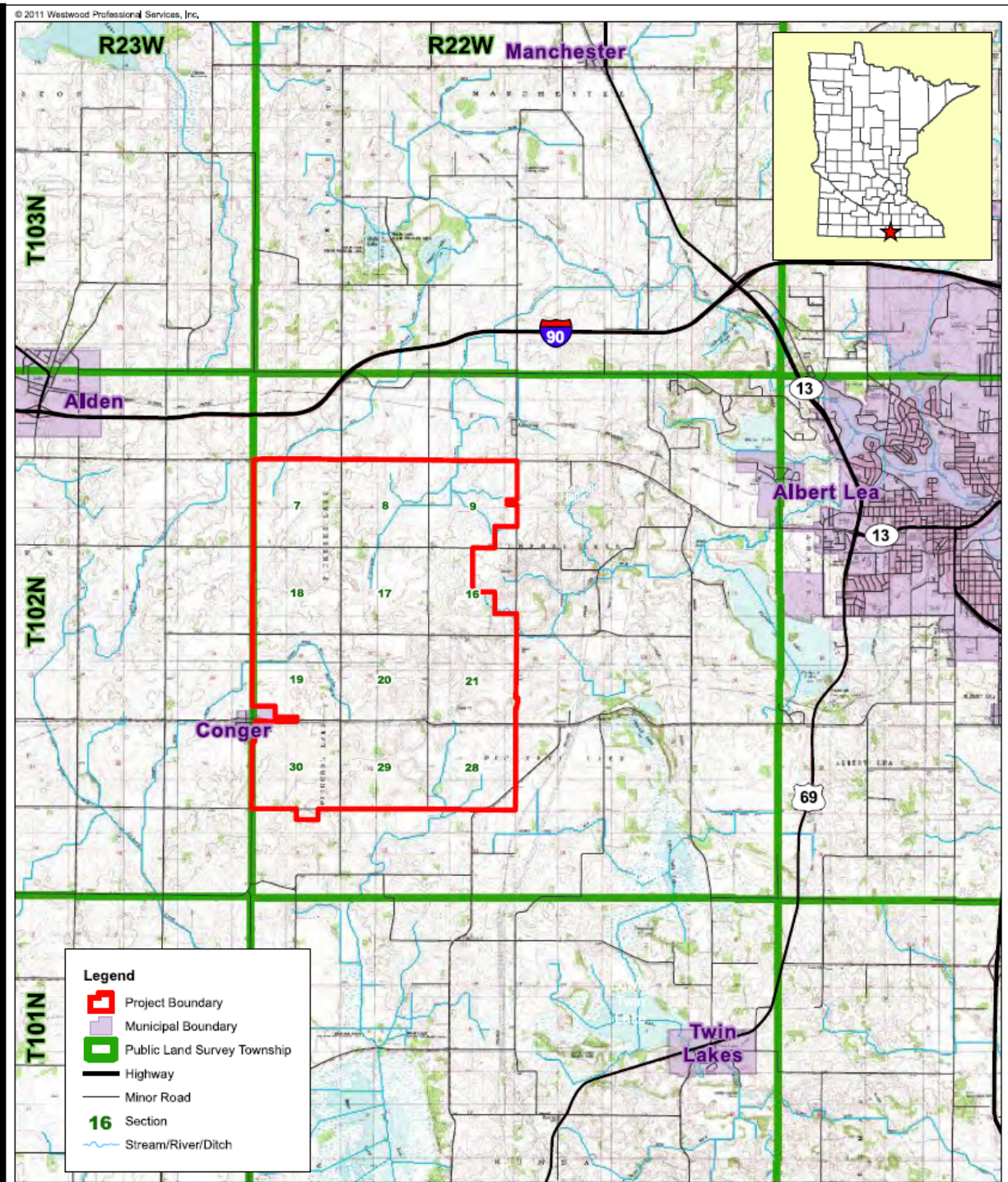
**Project Contacts and Information.** If you have questions or if you would like further information about this Project please contact:

Ingrid Bjorklund, State Permit Manager  
Minnesota Department of Commerce  
85 7<sup>th</sup> Place East, Suite 500  
St. Paul, MN 55101  
(651) 297-7039  
Fax: 651-297-7891  
[ingrid.bjorklund@state.mn.us](mailto:ingrid.bjorklund@state.mn.us)

Larry Hartman, Public Advisor  
Minnesota Department of Commerce  
85 7<sup>th</sup> Place East, Suite 500  
St. Paul, MN 55101  
(651) 296-5089  
[larry.hartman@state.mn.us](mailto:larry.hartman@state.mn.us)

Questions about the Project and site permit application can also be directed to the applicant by contacting Bruce Freeman, Senior Project Executive, Avant Energy, Inc., agent for the Minnesota Municipal Power Agency, at 612-349-6868 or [Bruce.Freeman@AvantEnergy.com](mailto:Bruce.Freeman@AvantEnergy.com), at 200 South 6<sup>th</sup> Street, Suite 300, Minneapolis, MN 55402.

This document can be made available in alternative formats (i.e., large print or audio) by calling 651-296-0391 (voice). Persons with hearing or speech disabilities may call us through Minnesota Relay at 1-800-627-3529 or by dialing 711.



Data Source(s): USGS Topographic Map (2002); Mn/DOT Roads, Municipalities, Railroads and Townships (2006, 2010); USGS/EPA National Hydrography Dataset (2009); USFWS statewide wetlands (1979, 2009); MMPA (2011); Westwood (2011).

# Shell Rock Wind Farm

Freeborn County, Minnesota

## Project Location Map

Map 1b



Westwood Professional Services, Inc.  
7699 Anagram Drive  
Eden Prairie, MN 55344  
PHONE 952-937-5150  
FAX 952-937-5822  
TOLL FREE 1-888-937-5150  
www.westwoodps.com



© 2011 Westwood Professional Services, Inc.